



Book Online  
[www.cxn.com.au](http://www.cxn.com.au)

P: +61 7 555 69 888 | F: +61 7 3020 3805  
PO Box 283 Ashmore City, QLD Australia 4214  
E: [bookings@cxn.com.au](mailto:bookings@cxn.com.au) | W: [www.cxn.com.au](http://www.cxn.com.au)

## Con-X-ion Airport Transfers

Con-X-ion are leaders in the field of transportation, specialising in door to door airport and cruise transfer services, theme park and attraction transfers, day tours and group charter services.

With over 30 years of experience they are a trusted and reliable source for all of your transportation needs.

Con-X-ion meet all major flights and provide the most frequent and direct shuttle transfer services to and from Gold Coast, Brisbane, Sunshine Coast, Cairns, Toowoomba, Hervey Bay, Byron Bay, Sydney, Melbourne, Fiji airport's.

Con-X-ion staff are carefully selected to provide customers with the highest level of service, offering a swift, efficient, comfortable and safe way to travel.

Con-X-ion operate shuttle services to meet every cruise ship arriving and departing from Brisbane Ports (Hamilton and Fisherman Island Wharves) and service Holt Street Wharf for daily transfers to Tangalooma Island.

Take advantage of the Roo pass which combines airport transfers (Gold Coast or Brisbane) and theme park transfers. The Roo pass is Gold Coast's leading pass providing flexibility and great value for money.

Visit the Sunshine Coast's leading attractions – Australia Zoo and Aussie World. Con-X-ion provide return services daily from Sunshine Coast accommodation and Brisbane Airport.

Con-X-ion offer a number of day tours carefully tailored to showcase the very best of the Sunshine Coast region.

Con-X-ion provide charter options for groups or for travellers arriving outside of scheduled service times or that require a private service, which includes meet and greet, portage and direct transfer to their destination.

Leave it to the experts to provide a complete range of transfer solutions within Australia!



Book Online [www.cxn.com.au](http://www.cxn.com.au)



Or be upgraded to the next available business class flight. Conditions apply, see website for details

GOLD COAST | BRISBANE | SUNSHINE COAST | TOOWOOMBA | CAIRNS  
SYDNEY | MELBOURNE | HERVEY BAY | BYRON BAY | FIJI





**SEAT IN COACH SHUTTLE SERVICES**

- **Brisbane Airport to:**
  - Gold Coast★
  - Holt St. (Tangalooma), Hamilton & Fishermans Island Wharves
  - Brisbane City - Sunshine Coast★
  - Toowoomba★ - Hervey Bay - Byron Bay
- **Brisbane City to:**
  - Holt Street, Hamilton and Fishermans Island Wharves
  - Gold Coast & Gold Coast theme parks (via airport)
  - Sunshine Coast (via airport)
  - Hervey Bay (Via Airport) - Toowoomba (Via Airport)
- **Gold Coast Airport to:** Gold Coast★
- **Sunshine Coast Airport to:** Sunshine Coast★ Hervey Bay
- **Cairns Airport to:** Cairns City, Palm Cove & Port Douglas
- **Melbourne Airport to:** Melbourne City
- **Sydney Airport to:** Sydney City
- **Nadi International Airport to:** Fiji Hotels

★ = service Accommodation and private residences

**OTHER SERVICES:**

- **GOLD COAST**
  - Movie World - Sea World - Wet'n'Wild
  - Dreamworld - Whitewater World
  - Paradise Country
  - Currumbin Wildlife Sanctuary
  - Harbour Town Outlet Shopping
  - Pacific Fair Shopping Centre
  - Night Quarter\* (Roo Passes® Excluded)
  - Australian Outback Spectacular\* (Roo Passes® Excluded)
  - Catch a Crab and Tweed Endeavours\* (Roo Passes® Excluded)
- **ROO PASSES® (GOLD COAST)**
  - 1 to 14 Day Passes including return airport transfers from Brisbane or Gold Coast Airports and the above Theme Parks/Attractions (Excludes AOS, GCST & CACTE)
- **SUNSHINE COAST**
  - Australia Zoo - Aussie World
  - Montville/ Maleny Day Tour
  - Tastes of the Sunshine Coast Day Tour
  - Eumundi Market Transfers





Book Online  
www.cxn.com.au

Gross Rates - QUOTED in AUD  
EFFECTIVE 1/4/2017 - 31/3/2018

**PRE-BOOKED SERVICES**

P: +61 7 555 69 888 | F: +61 7 3020 3805  
PO Box 283 Ashmore City, QLD Australia 4214  
E: bookings@cxn.com.au | W: www.cxn.com.au



### BRISBANE AIRPORT TRANSFERS

BRISBANE AIRPORT TO:		ADULT	CHILD	FAMILY
Sanctuary Cove to North of Burleigh (west of highway – serviceable areas apply)	One Way	\$ 54.00	\$ 28.00	\$ 136.00
	Return	\$ 99.00	\$ 50.00	\$ 248.00
Tweed Heads, Tweed South, Tweed West, Banora Point, Terranora, Bilambil	One Way	\$ 72.00	\$ 50.00	\$ 194.00
	Return	\$ 136.00	\$ 96.00	\$ 366.00
Gilston, Coomera, Maudsland	One Way	\$ 59.00	\$ 28.00	\$ 136.00
	Return	\$ 99.00	\$ 50.00	\$ 248.00
Kingscliff (Salt & Peppers)	One Way	\$ 95.00	\$ 75.00	\$ 265.00
	Return	\$ 185.00	\$ 145.00	\$ 515.00
Gold Coast Airport	One Way	\$ 68.00	\$ 53.00	\$ 189.00
	Return	\$ 132.00	\$ 102.00	\$ 366.00

BRISBANE AIRPORT TO / FROM BRISBANE		ADULT	2+ ADULT	CHILD	FAMILY
Brisbane Accommodation, Brisbane Transit Centre, Hamilton Wharf, Holt St Wharf (including Brisbane Accommodation to Hamilton/Holt St Wharf)	One Way	\$ 22.00	\$ 17.00	\$ 10.00	\$ 44.00
	Return	\$ 40.00	\$ 30.00	\$ 18.00	\$ 78.00

BRISBANE AIRPORT TO / FROM SUNSHINE COAST		ADULT	2+ ADULT	CHILD	FAMILY
Sunshine Coast coastal areas to Coolum Beach	One Way	\$ 53.00	\$ 47.00	\$ 41.00	\$ 135.00
	Return	\$ 100.00	\$ 88.00	\$ 78.00	\$ 254.00
Sunshine Coast coastal areas from Peregian Beach to Noosa	One Way	\$ 58.00	\$ 50.00	\$ 43.00	\$ 143.00
	Return	\$ 110.00	\$ 94.00	\$ 80.00	\$ 268.00
Cooroy, Diddillibah, Doonan, Kiels Moutain, Nambour, Tanawha, Mons, Rosemount, Tinbeerwha & Woombye	One Way	\$ 63.00	\$ 57.00	\$ 51.00	\$ 165.00
	Return	\$ 120.00	\$ 108.00	\$ 98.00	\$ 314.00

Family- 2 adults and 2 children. Child 1-13 years. Infants under one travel free - sitting on parents/carers laps.  
Prices are subject to change. Terms and conditions apply. Please refer to website www.cxn.com.au



Book Online [www.cxn.com.au](http://www.cxn.com.au)

**MAKE YOUR FLIGHT GUARANTEED**

Or be upgraded to the next available business class flight. Conditions apply, see website for details.

GOLD COAST | BRISBANE | SUNSHINE COAST | TOOWOOMBA | CAIRNS  
SYDNEY | MELBOURNE | HERVEY BAY | BYRON BAY | FIJI

Prices are subject to change. Terms and conditions apply. Please refer to website: www.cxn.com.au

6912 - v22





Book Online  
www.cxn.com.au

Gross Rates - QUOTED in AUD  
EFFECTIVE 1/4/2017 - 31/3/2018  
**PRE-BOOKED SERVICES**

P: +61 7 555 69 888 | F: +61 7 3020 3805  
PO Box 283 Ashmore City, QLD Australia 4214  
E: bookings@cxn.com.au | W: www.cxn.com.au



**GOLD COAST AIRPORT TRANSFERS**

GOLD COAST AIRPORT TO:		ADULT	CHILD	FAMILY
Coolangatta, Tweed Heads, Main Beach, Surfers Paradise, Chevron Island, Broadbeach, Miami, Burleigh Heads	One Way	\$ 22.00	\$ 13.00	\$ 57.00
	Return	\$ 41.00	\$ 22.00	\$ 110.00
Palm Beach, Currumbin, Tugun, Billonga	One Way	\$ 15.00	\$ 10.00	\$ 40.00
	Return	\$ 30.00	\$ 20.00	\$ 80.00
Robina, Elanora, Clear Island Waters, Stevens, Burleigh Waters, Reedy Creek	One Way	\$ 26.00	\$ 17.00	\$ 69.00
	Return	\$ 48.00	\$ 30.00	\$ 126.00
Labrador, Southport, Ashmore, Benowa, Carrara, Merrimac, Molendinar, Sorrento, Bundall, Broadbeach Waters, Isle of Capri	One Way	\$ 30.00	\$ 19.00	\$ 79.00
	Return	\$ 57.00	\$ 36.00	\$ 150.00
Mudgeeraba, Runaway Bay, Worongary, Nerang, Hollywell, Coombabah, Arundel, Parkwood, Biggera Waters	One Way	\$ 36.00	\$ 27.00	\$ 99.00
	Return	\$ 68.00	\$ 52.00	\$ 188.00
Sanctuary Cove, Hope Island, Oxenford, Monterey Keys, Gaven, Studio Village, Pacific Pines, Santa Barbara, Helensvale Paradise Point	One Way	\$ 44.00	\$ 33.00	\$ 121.00
	Return	\$ 85.00	\$ 64.00	\$ 234.00
Coomera, Upper Coomera, Coomera Waters	One Way	\$ 50.00	\$ 39.00	\$ 139.00
	Return	\$ 96.00	\$ 74.00	\$ 266.00
Kingscliff (Salt & Peppers)	One Way	\$ 25.00	\$ 20.00	\$ 90.00
	Return	\$ 50.00	\$ 40.00	\$ 180.00

GOLD COAST AIRPORT TO:		ADULT	CHILD	FAMILY
Byron Bay	One Way	\$ 40.00	\$ 20.00	\$ 120.00
	Return	\$ 80.00	\$ 40.00	\$ 240.00

Family- 2 adults and 2 children. Child 1-13 years. Infants under one travel free - sitting on parents/carers laps.  
Prices are subject to change. Terms and conditions apply. Please refer to website www.cxn.com.au



Book Online [www.cxn.com.au](http://www.cxn.com.au)

**MAKE YOUR FLIGHT GUARANTEED**

Or be upgraded to the next available business class flight. Conditions apply, see website for details

GOLD COAST | BRISBANE | SUNSHINE COAST | TOOWOOMBA | CAIRNS  
SYDNEY | MELBOURNE | HERVEY BAY | BYRON BAY | FIJI





Book Online  
www.cxn.com.au



Gross Rates - QUOTED in AUD  
EFFECTIVE 1/4/2017 - 31/3/2018

**PRE-BOOKED SERVICES**

P: +61 7 555 69 888 | F: +61 7 3020 3805  
PO Box 283 Ashmore City, QLD Australia 4214  
E: bookings@cxn.com.au | W: www.cxn.com.au

**SUNSHINE COAST AIRPORT TRANSFERS - Sell Rates**

SUNSHINE COAST AIRPORT TO:		ADULT	2+ ADULT	CHILD	Family
Coolum, Marcoola, Yaroomba	One Way	\$ 18.00	N/A	\$ 12.00	\$ 55.00
	Return	\$ 36.00	N/A	\$ 24.00	\$ 110.00
Peregian Beach, Peregian Springs, Marcus Beach, Castaways	One Way	\$ 25.00	N/A	\$ 15.00	\$ 70.00
	Return	\$ 50.00	N/A	\$ 30.00	\$ 140.00
Noosa, Sunrise Beach, Sunshine Beach, Tewantin	One Way	\$ 30.00	N/A	\$ 16.00	\$ 80.00
	Return	\$ 60.00	N/A	\$ 32.00	\$ 160.00
Twin Waters, Cotton Tree, Maroochydore, Alexandra Headland, Mooloolaba, Pacific Paradise, Mudjimba	One Way	\$ 18.00	\$ 16.00	\$ 10.00	\$ 42.00
	Return	\$ 36.00	\$ 32.00	\$ 20.00	\$ 84.00
Caloundra, Pelican Waters, Dicky Beach, Golden Beach, Kings Beach, Moffat Beach, Shelley Beach	One Way	\$ 34.00	\$ 30.00	\$ 15.00	\$ 75.00
	Return	\$ 68.00	\$ 60.00	\$ 30.00	\$ 150.00
Buderim, Mountain Creek	One Way	\$ 25.00	\$ 22.00	\$ 15.00	\$ 59.00
	Return	\$ 50.00	\$ 44.00	\$ 30.00	\$ 118.00

Family- 2 adults and 2 children. Child 1-13 years. Infants under one travel free - sitting on parents/carers laps.  
Prices are subject to change. Terms and conditions apply. Please refer to website www.cxn.com.au



Book Online [www.cxn.com.au](http://www.cxn.com.au)



GOLD COAST | BRISBANE | SUNSHINE COAST | TOOWOOMBA | CAIRNS  
SYDNEY | MELBOURNE | HERVEY BAY | BYRON BAY | FIJI

Prices are subject to change. Terms and conditions apply. Please refer to website: www.cxn.com.au

6912 - v22





Book Online  
www.cxn.com.au

Gross Rates - QUOTED in AUD  
EFFECTIVE 1/4/2017 - 31/3/2018

**PRE-BOOKED SERVICES**

P: +61 7 555 69 888 | F: +61 7 3020 3805  
PO Box 283 Ashmore City, QLD Australia 4214  
E: bookings@cxn.com.au | W: www.cxn.com.au



**BRISBANE AIRPORT TRANSFERS**

DOOR TO DOOR SUBURBS		1 ADULT	2+ ADULT	CHILD	1 Concession	2+ Concession
Toowoomba	One Way	\$ 80.00	\$ 70.00	\$ 45.00	\$ 75.00	\$ 65.00
	Return	\$ 145.00	\$ 125.00	\$ 75.00	\$ 135.00	\$ 115.00
Withcott, Helidon	One Way	\$ 75.00	\$ 65.00	\$ 40.00	\$ 70.00	\$ 60.00
	Return	\$ 135.00	\$ 115.00	\$ 65.00	\$ 125.00	\$ 105.00
Gatton, Grantham	One Way	\$ 70.00	\$ 60.00	\$ 35.00	\$ 65.00	\$ 55.00
	Return	\$ 125.00	\$ 105.00	\$ 55.00	\$ 115.00	\$ 95.00

TRANSIT STOPS		1 ADULT	2+ ADULT	CHILD
Toowoomba Info Centre, Withcott Hotel, Gatton NAB, Grantham Newsagency Transit Stops	One Way	\$ 60.00	\$ 55.00	\$ 40.00
	Return	\$ 105.00	\$ 95.00	\$ 65.00
Plainlands Transit Stop, Hattonvale Transit Stop, Minden Transit Stop, Marburg Community Centre Old Highway	One Way	\$ 55.00	\$ 50.00	\$ 35.00
	Return	\$ 95.00	\$ 80.00	\$ 60.00
Haigslea Transit Stop	One Way	\$ 50.00	\$ 45.00	\$ 28.00
	Return	\$ 85.00	\$ 75.00	\$ 47.00
Blacksoil/Ipswich: Blacksoil BP Service Station, Brassall Bus stop, North Ipswich Bus stop, Karalee Shell Service Station, Dinmore Railway Station car park, Redbank Transit stop, Goodna Transit Stop, Sumner Park/ Jindalee Transit Stop	One Way	\$ 35.00	\$ 30.00	\$ 19.00
	Return	\$ 60.00	\$ 50.00	\$ 30.00



**CONDITIONS**

Child 1-13 years.  
Infants under one travel free- sitting on parents/carers laps.  
Concession= pensioner or student.  
Prices are subject to change.  
Terms and conditions apply.  
Please refer to website  
www.cxn.com.au

Supplement For Pick ups/ Set downs (charge per transfer NOT per person)	
Cranley, Glenvale West, Torrington	\$ 10.00
Cotswold Hills	\$ 15.00
Blue Mt Heights, Flagstone Creek, Hodgson Vale, Murphys Creek, Westbrook	\$ 29.00
Charlton, Highfields	\$ 36.00
Gowrie Junction, Preston, Wyreema	\$ 40.00
Cabarlah, Cambooya, Kingsthorpe, Meringandan	\$ 53.00
Hampton, Oakey	\$ 65.00

Goombungee, Pittsworth	\$ 80.00
Allora, Clifton	\$ 89.00
Crows Nest, Haden, Jondaryan	\$ 92.00
Warwick	\$ 99.00
Dalby, Millmerran	\$ 157.00
Chinchilla	\$ 236.00
Goondiwindi	\$ 314.00



Book Online [www.cxn.com.au](http://www.cxn.com.au)



Or be upgraded to the next available business class flight. Conditions apply, see website for details

GOLD COAST | BRISBANE | SUNSHINE COAST | TOOWOOMBA | CAIRNS  
SYDNEY | MELBOURNE | HERVEY BAY | BYRON BAY | FIJI





Book Online  
www.cxn.com.au

Gross Rates - QUOTED in AUD  
EFFECTIVE 1/4/2017 – 31/3/2018

**PRE-BOOKED SERVICES**

P: +61 7 555 69 888 | F: +61 7 3020 3805  
PO Box 283 Ashmore City, QLD Australia 4214  
E: bookings@cxn.com.au | W: www.cxn.com.au



**SYDNEY AIRPORT TRANSFERS - Sell Rates**

SYDNEY KINGSFORD SMITH AIRPORT TO:		ADULT	CHILD
Sydney CBD accommodation	One Way	\$ 22.00	\$ 22.00
	Return	\$ 44.00	\$ 44.00

**MELBOURNE AIRPORT TRANSFERS - Sell Rates**

TULLAMARINE AIRPORT TRANSFERS TO: (including personalised meet & greet)		ADULT	CHILD	FAMILY
Melbourne CBD Accommodation	One Way	\$ 29.00	\$ 22.00	\$ 80.00
	Return	\$ 53.00	\$ 39.00	\$ 145.00
St Kilda, South Yarra, Richmond Accommodation.	One Way	\$ 43.00	\$ 24.00	\$ 110.00
	Return	\$ 81.00	\$ 43.00	\$ 205.00

**MEET & GREET SERVICE:**

(Meet & Greet service includes the driver waiting for the passengers at the baggage carousel for Domestic and in the Arrival Hall for International)

Family- 2 adults and 2 children. Child 1-13 years. Infants under one travel free - sitting on parents/carers laps.  
Prices are subject to change. Terms and conditions apply. Please refer to website www.cxn.com.au



Book Online [www.cxn.com.au](http://www.cxn.com.au)



Or be upgraded to the next available business class flight. Conditions apply, see website for details

GOLD COAST | BRISBANE | SUNSHINE COAST | TOOWOOMBA | CAIRNS  
SYDNEY | MELBOURNE | HERVEY BAY | BYRON BAY | FIJI

Prices are subject to change. Terms and conditions apply. Please refer to website: [www.cxn.com.au](http://www.cxn.com.au)

6912 - v22





Book Online  
www.cxn.com.au



Gross Rates - QUOTED in AUD  
EFFECTIVE 1/4/2017 - 31/3/2018

**PRE-BOOKED SERVICES**

P: +61 7 555 69 888 | F: +61 7 3020 3805  
PO Box 283 Ashmore City, QLD Australia 4214  
E: bookings@cxn.com.au | W: www.cxn.com.au

**CAIRNS AIRPORT - Sell Rates**

CAIRNS AIRPORT AIRPORT TO:		ADULT	CHILD	FAMILY
Cairns CBD	One Way	\$ 15.00	\$ 7.50	N/A
Northern Beaches: Machans Beach, Holloways Beach, Freshwater Station, Skyrail, Tjapukai Cultural Centre, Smithfield, Yorkeys Knob, Cairns South to Woree, Ellis Beach, Palm Cove, Paradise Palms, Tropical Zoo, Clifton Beach, Kewarra Beach, Trinity Beach.	One Way	\$ 22.00	\$ 11.00	\$ 59.00
Port Douglas, Hartley's Creek, Turtle Cove, Thala Beach Lodge.	One Way	\$ 41.00	\$ 20.50	\$ 111.00

Family- 2 adults and 2 children. Child 1-13 years. Infants under one travel free - sitting on parents/carers laps.  
Prices are subject to change. Terms and conditions apply. Please refer to website www.cxn.com.au



Book Online [www.cxn.com.au](http://www.cxn.com.au)

**MAKE YOUR FLIGHT GUARANTEED**

Or be upgraded to the next available business class flight. Conditions apply, see website for details

GOLD COAST | BRISBANE | SUNSHINE COAST | TOOWOOMBA | CAIRNS  
SYDNEY | MELBOURNE | HERVEY BAY | BYRON BAY | FIJI

Prices are subject to change. Terms and conditions apply. Please refer to website: www.cxn.com.au

6912 - v22







Book Online  
www.cxn.com.au



Gross Rates - QUOTED in AUD  
EFFECTIVE 1/4/2017 - 31/3/2018

**PRE-BOOKED SERVICES**

P: +61 7 555 69 888 | F: +61 7 3020 3805  
PO Box 283 Ashmore City, QLD Australia 4214  
E: bookings@cxn.com.au | W: www.cxn.com.au

All rates are for one way transfers, per person (except family), in AUD and include GST

<b>FIJI NADI INTERNATIONAL AIRPORT TRANSFERS - Sell Rates</b>		
<b>FIJI NADI INTERNATIONAL AIRPORT TO:</b>		<b>ADULT</b>
Nadi Airport area including Tokatoka Resort, Raffles Gateway Hotel, Trans-International Hotel, Novotel Nadi, Tanoa International Hotel, Tanoa Apartments, Mercure Nadi, Nadi Bay Resort Hotel, Tanoa Sky Lodge, Melanesian Hotel	One Way	\$ 20.00
Nadi Town Hotel & Backpackers	One Way	\$ 29.00
Wailoaloa Beach including Smugglers Cove, Aquarius Fiji, Horizon Backpackers, Nadi Bay Apartments, Bamboo Hostel, Travellers Beach, Turtle Airways Sea Plane Base	One Way	\$ 23.00
Club Fiji	One Way	\$ 23.00
Denarau Island including Port Denarau, Wyndham Resort, Radisson Blu Resort, Sheraton Fiji Resort & Spa, The Westin Fiji Resort & Spa, Sofitel Fiji Resort & Spa, Fiji Beach Resort & Spa managed by Hilton, The Terraces Apartments	One Way	\$ 41.00
Sonaisali Island Resort	One Way	\$ 41.00
Natadola Bay including Intercontinental Fiji Golf Resort & Spa, Natadola Beach Resort & Yatule Beach Resort (min 2 pax on SIV)	One Way	\$ 46.00
Shangri-La's Fijian Resort	One Way	\$ 46.00
Crows Nest Resort / Outrigger on Lagoon Resort & Spa / Bedarra Inn	One Way	\$ 49.00
Tambua Sands / Hideaway Resort	One Way	\$ 53.00
The Naviti Resort / Warwick Fiji Resort & Spa	One Way	\$ 57.00
Crusoes Retreat	One Way	\$ 93.00
Pacific Harbour including The Pearl Pacific Resort, Tsulu Backpackers, Uprising Beach Resort (min of 2 pax on SIV)	One Way	\$ 95.00
Vuda Point / First Landing Resort / Anchorage Resort	One Way	\$ 36.00
Volivoli Beach Resort / Wananavu Beach Resort (min 2 pax on SIV)	One Way	\$ 111.00

Family- 2 adults and 2 children. Child 1-13 years. Infants under one travel free- sitting on parents/carers laps.  
Prices are subject to change. Terms and conditions apply. Please refer to website www.cxn.com.au



Book Online [www.cxn.com.au](http://www.cxn.com.au)

**MAKE YOUR FLIGHT GUARANTEED**

Or be upgraded to the next available business class flight. Conditions apply, see website for details

GOLD COAST | BRISBANE | SUNSHINE COAST | TOOWOOMBA | CAIRNS  
SYDNEY | MELBOURNE | HERVEY BAY | BYRON BAY | FIJI

Prices are subject to change. Terms and conditions apply. Please refer to website: www.cxn.com.au

6912 - v22





Book Online  
www.cxn.com.au



Gross Rates - QUOTED in AUD  
EFFECTIVE 1/4/2017 - 31/3/2018

**PRE-BOOKED SERVICES**

P: +61 7 555 69 888 | F: +61 7 3020 3805  
PO Box 283 Ashmore City, QLD Australia 4214  
E: bookings@cxn.com.au | W: www.cxn.com.au

<b>THEME PARK TRANSFERS - Sell Rates</b>				
PARK / ATTRACTION		ADULT	CHILD	FAMILY
Dreamworld, WhiteWater World, Movie World, Wet'n'Wild, Currumbin Wildlife Sanctuary, Harbour Town	Return	\$ 22.00	\$ 11.00	\$ 55.00
Sea World	Return	\$ 16.00	\$ 8.00	\$ 40.00
Australian Outback Spectacular, NightQuarter	Return	\$ 20.00	\$ 20.00	\$ 80.00
Catch a crab	Return	\$ 25.00	\$ 20.00	\$ 70.00
Paradise Country	Return	\$ 22.00	\$ 11.00	\$ 55.00
Game Over	Return	\$ 22.00	\$ 11.00	\$ 55.00

The most southern pick up point for Theme Park Transfers are from Accommodation Houses in Coolangatta.

\*Con-X-ion is the official transport provider for Australian Outback Spectacular show at Village Roadshow Theme Parks.

For Australian Outback Spectacular transfer bookings please call Village Roadshow Theme Parks customer connect direct on 13 33 86.

<b>THEME PARK TRANSFER PASS - Sell Rates</b>				
PASS		ADULT	CHILD	FAMILY
3 Day Pass	Return	\$ 59.00	\$ 29.00	\$ 147.00
5 Day Pass	Return	\$ 89.00	\$ 45.00	\$ 223.00
7 Day Pass	Return	\$ 109.00	\$ 59.00	\$ 277.00

Family- 2 adults and 2 children. Child 1-13 years. Infants under one travel free - sitting on parents/carers laps. Prices are subject to change. Terms and conditions apply. Please refer to website www.cxn.com.au



Book Online [www.cxn.com.au](http://www.cxn.com.au)

**MAKE YOUR FLIGHT GUARANTEED**

GOLD COAST | BRISBANE | SUNSHINE COAST | TOOWOOMBA | CAIRNS  
SYDNEY | MELBOURNE | HERVEY BAY | BYRON BAY | FIJI

Prices are subject to change. Terms and conditions apply. Please refer to website: www.cxn.com.au

6912 - v22





Book Online  
www.cxn.com.au

Gross Rates - QUOTED in AUD  
EFFECTIVE 1/4/2017 - 31/3/2018

**PRE-BOOKED SERVICES**

P: +61 7 555 69 888 | F: +61 7 3020 3805  
PO Box 283 Ashmore City, QLD Australia 4214  
E: bookings@cxn.com.au | W: www.cxn.com.au

**SUNSHINE COAST DAY TOURS**

Montville/ Maleny Day Tour	DEPARTS	ADULT	CHILD	FAMILY
Dulong Lookout, Flaxton Barn, Montville Village, Maleny Township, Glasshouse Mountain Views, Mary Cairncross Park	<b>Thursday</b>	<b>\$ 69.00</b>	<b>\$ 42.00</b>	<b>\$ 180.00</b>

Tastes of The Sunshine Coast Day Tour	DEPARTS	ADULT	CHILD	FAMILY
Ginger, Coffee, Chocolates, Macadamia, Wine, Cheeses, Candy, Ice Cream, Beer.	<b>Tuesday</b>	<b>\$ 69.00</b>	<b>\$ 42.00</b>	<b>\$ 180.00</b>

**SUNSHINE COAST TRANSFERS**

Eumundi Markets Shuttle		DEPARTS	ADULT	CHILD	FAMILY
Peregian Beach - Noosa	Return	Wed & Sat	\$ 27.00	\$ 17.00	\$ 71.00
Mooloolaba - Coolum	Return	Wed & Sat	\$ 29.00	\$ 24.00	\$ 82.00
Caloundra - Minyama	Return	Wed & Sat	\$ 32.00	\$ 24.00	\$ 88.00

Australia Zoo Transfers		ADULT	2+ ADULT	CHILD	FAMILY
Caloundra - Coolum	Return	\$ 30.00	\$ 25.00	\$ 15.00	\$ 65.00
Peregian - Noosa	Return	\$ 35.00	\$ 30.00	\$ 20.00	\$ 80.00

Aussie World Transfers		ADULT	2+ ADULT	CHILD	FAMILY
Caloundra - Coolum	Return	\$ 20.00	\$ 15.00	\$ 10.00	\$ 40.00
Peregian - Noosa	Return	\$ 25.00	\$ 20.00	\$ 15.00	\$ 55.00

Family- 2 adults and 2 children. Child 1-13 years. Infants under one travel free - sitting on parents/carers laps.  
Prices are subject to change. Terms and conditions apply. Please refer to website www.cxn.com.au



Book Online [www.cxn.com.au](http://www.cxn.com.au)



GOLD COAST | BRISBANE | SUNSHINE COAST | TOOWOOMBA | CAIRNS  
SYDNEY | MELBOURNE | HERVEY BAY | BYRON BAY | FIJI

Prices are subject to change. Terms and conditions apply. Please refer to website: www.cxn.com.au

6912 - v22





Book Online  
www.cxn.com.au

Gross Rates - QUOTED in AUD  
EFFECTIVE 1/4/2017 - 31/3/2018

**PRE-BOOKED SERVICES**

P: +61 7 555 69 888 | F: +61 7 3020 3805  
PO Box 283 Ashmore City, QLD Australia 4214  
E: bookings@cxn.com.au | W: www.cxn.com.au



<b>DEPARTS TO</b>		
<b>Dream World - Movie World - Sea World Wet 'N' Wild - Paradise Country Harbour Town</b>		
Tweed	8:00	
Coolangatta	8:05	
Kirra	8:10	
Currumbin Sanctuary	8:20	
Palm Beach	8:25	
Burleigh Heads	8:40	
Miami	8:45	
Mermaid Beach (Turtle Beach only)	8:50	10:25
Jupiter's Casino	9:00	10:30
Sofitel	9:00	10:30
Broadbeach	9:00	10:30
Southern Surfers	9:05	10:35
Watermark	9:10	10:40
Hotel Grand Chancellor	9:15	10:45
Central Surfers	9:15	10:45
Outrigger Surfers Paradise	9:20	10:50
QT	9:25	10:55
Northern Surfers	9:30	11:00
Paradise Resort/Marriott	9:30	11:00
Versace/Sea World/Sheraton	9:40	11:05
Southport/Labrador	9:45	11:15
Ashmore Palms	9:50	11:15
Biggera Waters	9:50	11:20
<b>Sea World</b>		
Southport / Labrador	8:45	10:15
Biggera Waters	8:35	10:00
Ashmore Palms	8:30	9:55
<b>Currumbin Sanctuary</b>		
Ashmore Palms	7:20	
Southport / Labrador	7:20	
Sea World	7:30	
Main Beach	7:30	
Paradise Resort/Marriott	7:35	
Outrigger Surfers Paradise	7:40	
Hotel Grand Chancellor	7:45	
Broadbeach	7:50	
Star Casino	7:55	
Burleigh Heads	8:00	

<b>RETURNS</b>			
<b>Dream World - Movie World - Sea World Wet 'N' Wild - Paradise Country Harbour Town</b>			
<b>South all stops to Coolangatta from:</b>			
Sea World (South)	13:45	15:45	16:50*
Sea World (North)		16:15	
Dream World/ WhiteWater World	12:45	15:00	17:00
Movie World	12:55	15:15	17:15
Wet 'N' Wild	13:00	15:15	17:15
Paradise Country	13:00	15:10	
Harbour Town	13:15	15:30	17:30*
Currumbin Wildlife Sanctuary (North)	12:45		
* = no stops past Broadbeach			



**MAKE YOUR FLIGHT  
GUARANTEED**

Or be upgraded to the next available business class flight. Conditions apply, see website for details



**GOLD COAST | BRISBANE | SUNSHINE COAST | TOOWOOMBA | CAIRNS  
SYDNEY | MELBOURNE | HERVEY BAY | BYRON BAY | FIJI**

Prices are subject to change. Terms and conditions apply. Please refer to website: www.cxn.com.au

6912 - v22




 Book Online  
[www.cxn.com.au](http://www.cxn.com.au)

 Gross Rates - QUOTED in AUD  
 EFFECTIVE 1/4/2017 - 31/3/2018

**PRE-BOOKED SERVICES**

 P: +61 7 555 69 888 | F: +61 7 3020 3805  
 PO Box 283 Ashmore City, QLD Australia 4214  
 E: bookings@cxn.com.au | W: www.cxn.com.au


The convenient Airport/Theme Park and Attraction transfer pass that gives the traveller choice and flexibility. Valid for 30 days from first use of travel, the ROO® Pass can be utilized any day within that 30 day period. Options available are Airport return transfers plus 1 up to 7 Theme Park/Attraction return transfers.

	Airport Return transfers +	ADULT ROO PASS	CHILD ROO PASS	FAMILY ROO PASS
<b>BRISBANE AIRPORT RETURN TRANSFERS - Sell Rates</b>  Includes: Movie World, Dreamworld, WhiteWater World, Wet'N'Wild, Seaworld, Currumbin Wildlife Sanctuary, Superbee Honeyworld, Fleays Harbour Town Shopping Centre, Pacific Fair Shopping Centre and Surfers Paradise Shopping Precinct	1 Theme Park transfer	\$ 115.00	\$ 60.00	\$ 290.00
	2 Theme Park transfers	\$ 130.00	\$ 66.00	\$ 326.00
	3 Theme Park transfers	\$ 143.00	\$ 72.00	\$ 358.00
	5 Theme Park transfers	\$ 169.00	\$ 82.00	\$ 420.00
	7 Theme Park transfers	\$ 185.00	\$ 92.00	\$ 462.00
	10 Theme Park transfers	\$ 205.00	\$ 103.00	\$ 513.00
	14 Theme Park transfers	\$ 225.00	\$ 115.00	\$ 565.00

<b>GOLD COAST AIRPORT RETURN TRANSFERS - Sell Rates</b>  Includes: Movie World, Dreamworld, WhiteWater World, Wet'N'Wild, Seaworld, Currumbin Wildlife Sanctuary, Superbee Honeyworld, Fleays Harbour Town Shopping Centre, Pacific Fair Shopping Centre and Surfers Paradise Shopping Precinct	1 Theme Park transfer	\$ 60.00	\$ 30.00	\$ 150.00
	2 Theme Park transfers	\$ 70.00	\$ 33.00	\$ 173.00
	3 Theme Park transfers	\$ 79.00	\$ 39.00	\$ 197.00
	5 Theme Park transfers	\$ 105.00	\$ 55.00	\$ 265.00
	7 Theme Park transfers	\$ 129.00	\$ 65.00	\$ 323.00
	10 Theme Park transfers	\$ 149.00	\$ 75.00	\$ 373.00
	14 Theme Park transfers	\$ 165.00	\$ 85.00	\$ 415.00

<b>1 WAY GOLD COAST &amp;/Or 1 WAY BRISBANE AIRPORT RETURN TRANSFERS - Sell Rates</b>  Includes: Movie World, Dreamworld, WhiteWater World, Wet'N'Wild, Seaworld, Currumbin Wildlife Sanctuary, Superbee Honeyworld, Fleays Harbour Town Shopping Centre, Pacific Fair Shopping Centre and Surfers Paradise Shopping Precinct	1 Theme Park transfer	\$ 80.00	\$ 40.00	\$ 200.00
	2 Theme Park transfers	\$ 95.00	\$ 48.00	\$ 238.00
	3 Theme Park transfers	\$ 110.00	\$ 56.00	\$ 276.00
	5 Theme Park transfers	\$ 130.00	\$ 69.00	\$ 329.00
	7 Theme Park transfers	\$ 150.00	\$ 79.00	\$ 379.00
	10 Theme Park transfers	\$ 170.00	\$ 90.00	\$ 430.00
	14 Theme Park transfers	\$ 190.00	\$ 102.00	\$ 482.00

\*Airport Bookings are pre-booked to customer flight details. Theme Park/Attraction transfers are as per Con-x-ion's scheduled services. \*Valid for 30 days from first day of use. \*Non-transferable Child 1-13 yrs. Infants under three travel free. Prices are subject to change. Terms and conditions apply. Please refer to website: [www.cxn.com.au](http://www.cxn.com.au)


 Book Online [www.cxn.com.au](http://www.cxn.com.au)
**MAKE YOUR FLIGHT GUARANTEED**
Or be upgraded to the next available business class flight. Conditions apply, see website for details.

 GOLD COAST | BRISBANE | SUNSHINE COAST | TOOWOOMBA | CAIRNS  
 SYDNEY | MELBOURNE | HERVEY BAY | BYRON BAY | FIJI

 Prices are subject to change. Terms and conditions apply. Please refer to website: [www.cxn.com.au](http://www.cxn.com.au)

6912 - v22





Book Online  
www.cxn.com.au

Gross Rates - QUOTED in AUD  
EFFECTIVE 1/4/2017 - 31/3/2018

**PRE-BOOKED SERVICES**

P: +61 7 555 69 888 | F: +61 7 3020 3805  
PO Box 283 Ashmore City, QLD Australia 4214  
E: bookings@cxn.com.au | W: www.cxn.com.au

**FISHERMAN'S ISLAND CRUISE TERMINAL TRANSFERS**

BRISBANE AIRPORT TO/FROM FISHERMAN'S ISLAND CRUISE TERMINAL		ADULT	2+ ADULT	CHILD	FAMILY
Brisbane Airport	One Way	\$ 25.00	\$ 20.00	\$ 15.00	\$ 55.00
	Return	\$ 46.00	\$ 38.00	\$ 28.00	\$ 104.00

BRISBANE CITY TO/FROM FISHERMAN'S ISLAND CRUISE TERMINAL		ADULT	2+ ADULT	CHILD	FAMILY
Brisbane City Hotels	One Way	\$ 30.00	\$ 25.00	\$ 20.00	\$ 70.00
	Return	\$ 56.00	\$ 48.00	\$ 38.00	\$ 134.00

GOLD COAST TO/FROM FISHERMAN'S ISLAND CRUISE TERMINAL		ADULT	CHILD	FAMILY
Sanctuary Cove to North of Burleigh (west of highway - serviceable areas apply)	One Way	\$64.00	\$33.00	\$161.00
	Return	\$119.00	\$60.00	\$298.00
South of Burleigh, (South of Reedy Creek Road) Reedy Creek, Palm Beach, Elanora, Tallebudgera, Currumbin, Bilinga, Tugan, Coolangatta, West Burleigh, Currumbin Waters	One Way	\$69.00	\$37.00	\$175.00
	Return	\$130.00	\$70.00	\$330.00
Tweed Heads, Tweed South, Tweed West, Banora Point, Terranora, Bilambil	One Way	\$82.00	\$60.00	\$224.00
	Return	\$158.00	\$114.00	\$430.00

SUNSHINE COAST TO/FROM FISHERMANS ISLAND TERMINAL		ADULT	2+ ADULT	CHILD	FAMILY
Sunshine Coast Coastal areas to and including Coolum Beach	One Way	\$ 63.00	\$ 57.00	\$ 51.00	\$ 165.00
	Return	\$ 120.00	\$ 108.00	\$ 98.00	\$ 314.00
Sunshine Coast Coastal areas from Peregrin Beach to Noosa/ Noosaville	One Way	\$ 68.00	\$ 60.00	\$ 53.00	\$ 173.00
	Return	\$ 130.00	\$ 114.00	\$ 100.00	\$ 328.00
Cooroy, Diddillibah, Doonan, Kiels Mountain, Nambour, Tanawha, Mons, Rosemount, Tinbeerwah and Woombye	One Way	\$ 75.00	\$ 66.00	\$ 61.00	\$ 193.00
	Return	\$ 144.00	\$ 126.00	\$ 116.00	\$ 368.00

Family- 2 adults and 2 children. Child 1-13 years. Infants under one travel free - sitting on parents/carers laps.  
Prices are subject to change. Terms and conditions apply. Please refer to website www.cxn.com.au



Book Online [www.cxn.com.au](http://www.cxn.com.au)



GOLD COAST | BRISBANE | SUNSHINE COAST | TOOWOOMBA | CAIRNS  
SYDNEY | MELBOURNE | HERVEY BAY | BYRON BAY | FIJI





Book Online  
www.cxn.com.au

Gross Rates - QUOTED in AUD  
EFFECTIVE 1/4/2017 - 31/3/2018

**PRE-BOOKED SERVICES**

P: +61 7 555 69 888 | F: +61 7 3020 3805  
PO Box 283 Ashmore City, QLD Australia 4214  
E: bookings@cxn.com.au | W: www.cxn.com.au



**HAMILTON CRUISE TERMINAL TRANSFERS**

SUNSHINE COAST SUBURBS TO/FROM HAMILTON CRUISE TERMINAL		ADULT	2+ ADULT	CHILD	FAMILY
Sunshine Coast Coastal areas to and including Coolum Beach	One Way	\$ 58.00	\$ 52.00	\$ 46.00	\$ 150.00
	Return	\$ 110.00	\$ 98.00	\$ 88.00	\$ 284.00
Sunshine Coast Coastal areas from Peregrin Beach to Noosa/Noosaville	One Way	\$ 63.00	\$ 55.00	\$ 48.00	\$ 158.00
	Return	\$ 120.00	\$ 104.00	\$ 90.00	\$ 298.00
Cooroy, Diddillibah, Doonan, Kiels Mountain, Nambour, Tanawha, Mons, Rosemount, Tinbeerwah and Woombye	One Way	\$ 70.00	\$ 61.00	\$ 56.00	\$ 178.00
	Return	\$ 134.00	\$ 116.00	\$ 106.00	\$ 338.00

GOLD COAST SUBURBS TO/FROM HAMILTON CRUISE TERMINAL		ADULT	CHILD	FAMILY
Sanctuary Cove to North of Burleigh (west of highway - serviceable areas apply)	One Way	\$ 54.00	\$ 28.00	\$ 136.00
	Return	\$ 99.00	\$ 50.00	\$ 248.00
Gilston, Coomera, Maudsland	One Way	\$ 59.00	\$ 32.00	\$ 150.00
	Return	\$ 110.00	\$ 60.00	\$ 280.00
Tweed Heads, Tweed South, Tweed West, Banora Point, Terranora, Bilambil	One Way	\$ 72.00	\$ 50.00	\$ 194.00
	Return	\$ 136.00	\$ 96.00	\$ 366.00

Family- 2 adults and 2 children. Child 1-13 years. Infants under one travel free - sitting on parents/carers laps.  
Prices are subject to change. Terms and conditions apply. Please refer to website www.cxn.com.au



Book Online [www.cxn.com.au](http://www.cxn.com.au)



GOLD COAST | BRISBANE | SUNSHINE COAST | TOOWOOMBA | CAIRNS  
SYDNEY | MELBOURNE | HERVEY BAY | BYRON BAY | FIJI

Prices are subject to change. Terms and conditions apply. Please refer to website: www.cxn.com.au

6912 - v22



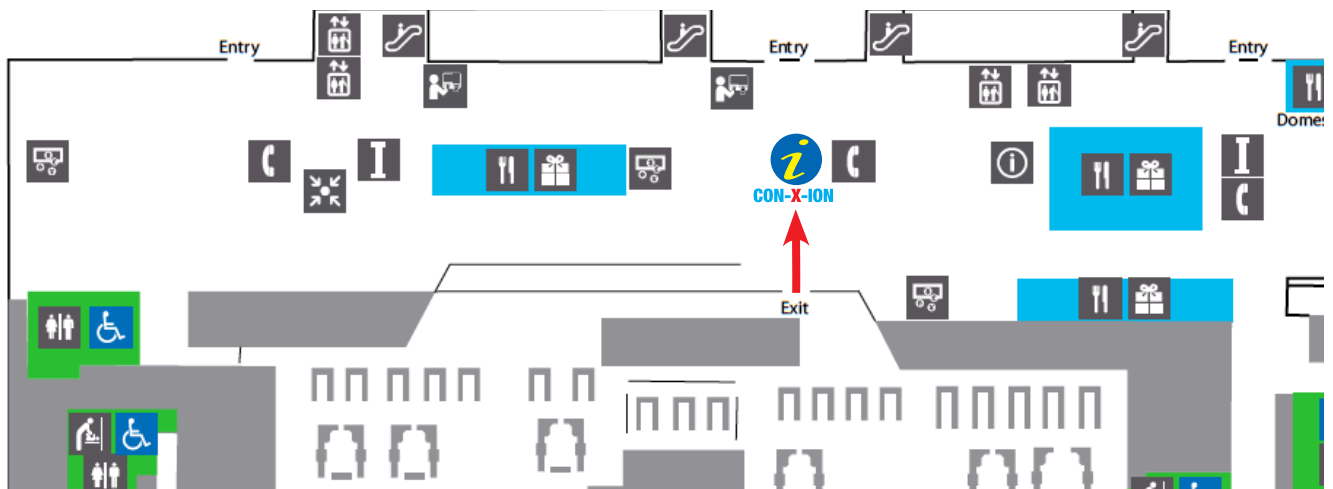


Book Online  
www.cxn.com.au

## BRISBANE INTERNATIONAL TERMINAL

### ARRIVAL INFORMATION FOR BRISBANE (BNE) INTERNATIONAL AIRPORT

All arriving passengers into Brisbane Airport are to proceed to the information counter where check in will occur with the Con-X-ion attendant. Passengers will then be directed to their departing shuttle bus. If you are unable to locate the information counter please ask one of the airport ambassadors for assistance, otherwise please phone 1300 266 946 or +61 7 5556 9888. Please endeavour to check in 5 minutes prior to scheduled departure to ensure the service can depart on time.



### DEPARTING PROCEDURE FOR:

- ✓ BRISBANE
- ✓ GOLD COAST
- ✓ SUNSHINE COAST
- ✓ TOOWOOMBA
- ✓ HERVEY BAY

Your Con-X-ion service should arrive during the 20 minute window outlined on your confirmation. You must be ready and waiting for the entirety of your allocated time frame, as our services will depart immediately once they reach the pick up location, and will be unable to wait for unaccounted for passengers. If you are not ready and waiting during the outlined times you may miss your assigned transfer and may not be eligible for refund or reimbursement. If your bus has not arrived after your scheduled departure time frame has expired please call Con-X-ion on 1300 266 946 or +61 7 5556 9888. **Please do not depart the pick up location without first making contact.**

### Late Flights

Passenger transfers booked on the last coach service allocated for the day that arrive on a delayed flight and miss their allocated pick up will need to make alternative travel arrangements at their own expense, a full refund will be issued for the arrival journey. Con-X-ion is not responsible for delayed flights. if your flight has been delayed and you are NOT on the last service of the day, please contact the Con-X-ion office 1300 266 946 and we will put you on the next available service.

Prices are subject to change. Terms & conditions apply. Please refer to website: www.cxn.com.au

Book Online [www.cxn.com.au](http://www.cxn.com.au)



GOLD COAST | BRISBANE | SUNSHINE COAST | TOOWOOMBA | CAIRNS  
SYDNEY | MELBOURNE | HERVEY BAY | BYRON BAY | FIJI





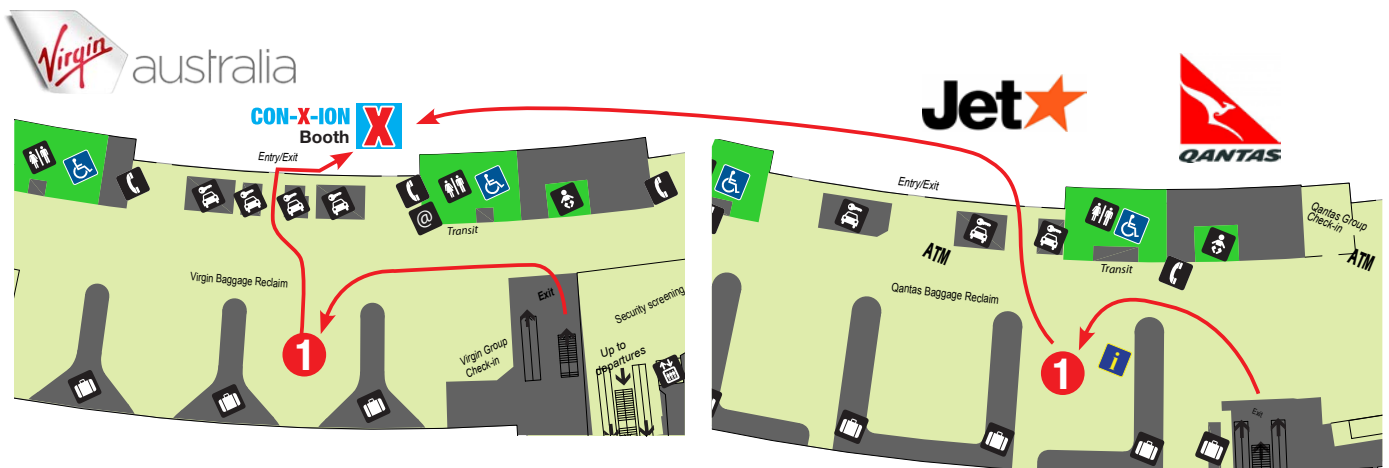


Book Online  
www.cxn.com.au

## BRISBANE DOMESTIC TERMINAL

### ARRIVAL INFORMATION FOR BRISBANE (BNE) DOMESTIC AIRPORT

All arriving passengers into Brisbane Airport are to proceed to the Con-X-ion booth where check in will occur with the Con-X-ion attendant. Passengers will then be directed to their departing shuttle bus. If you are unable to locate the Con-X-ion booth, please ask one of the Airport Ambassadors for assistance, otherwise please phone 1300 266 946 or +61 7 5556 9888. Please endeavour to check in 5 minutes prior to scheduled departure to ensure the service can depart on time.



### DEPARTING PROCEDURE FOR: ✓ BRISBANE ✓ GOLD COAST ✓ SUNSHINE COAST ✓ HERVEY BAY

Your Con-X-ion service should arrive during the 20 minute window outlined on your confirmation. You must be ready and waiting for the entirety of your allocated time frame, as our services will depart immediately once they reach the pick up location, and will be unable to wait for unaccounted for passengers. If you are not ready and waiting during the outlined times you may miss your assigned transfer and may not be eligible for refund or reimbursement. If your bus has not arrived after your scheduled departure time frame has expired please call Con-X-ion on 1300 266 946 or +61 7 5556 9888. Please do not depart the pick up location without first making contact.

### DEPARTING PROCEDURE FOR: ✓ TOOWOOMBA

The driver will meet passengers at the domestic airport bus and coach zone - Bus bay Red A2. (the sign has "A2" on it and it's in the red area – printed in red)

From the terminal, make your way to the lifts in front of Jetstar, and go up to the skywalk. Go across the skywalk, and use the second lift on the right to go back down to ground level, just before you reach the multi-level car park. Our driver will meet you on ground level between the two lifts – underneath the skywalk. Please be ready 15 minutes before our scheduled departure time. Please do not depart the pick up location without first making contact.

### Late Flights

Passenger transfers booked on the last coach service allocated for the day that arrive on a delayed flight and miss their allocated pick up will need to make alternative travel arrangements at their own expense, a full refund will be issued for the arrival journey. Con-X-ion is not responsible for delayed flights. If your flight has been delayed and you are NOT on the last service of the day, please contact the Con-X-ion office 1300 266 946 and we will put you on the next available service.

Prices are subject to change. Terms & conditions apply. Please refer to website: www.cxn.com.au

Book Online [www.cxn.com.au](http://www.cxn.com.au)



GOLD COAST | BRISBANE | SUNSHINE COAST | TOOWOOMBA | CAIRNS  
SYDNEY | MELBOURNE | HERVEY BAY | BYRON BAY | FIJI



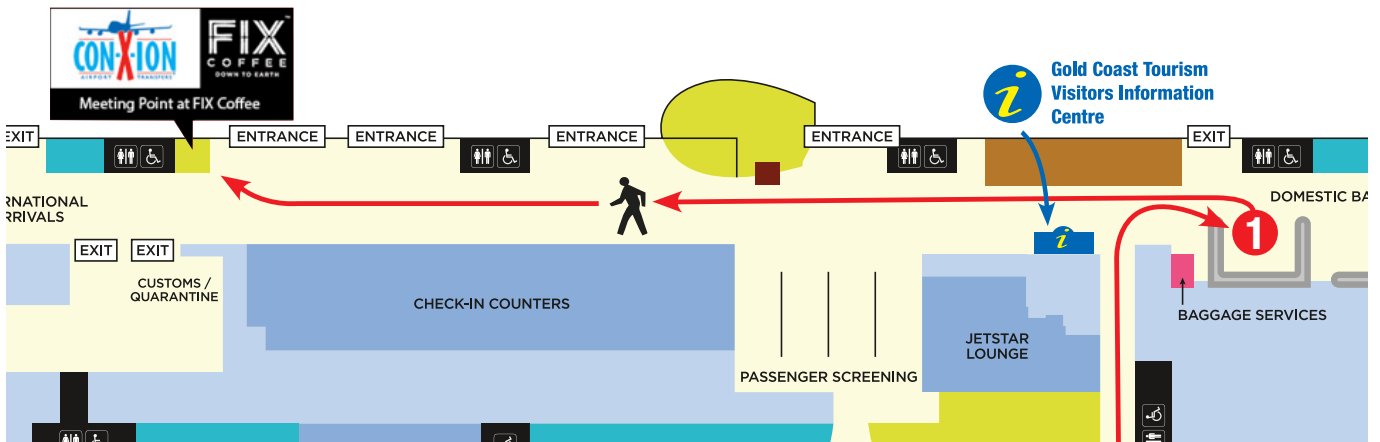


Book Online  
[www.cxn.com.au](http://www.cxn.com.au)

## GOLD COAST DOMESTIC AND INTERNATIONAL TERMINALS

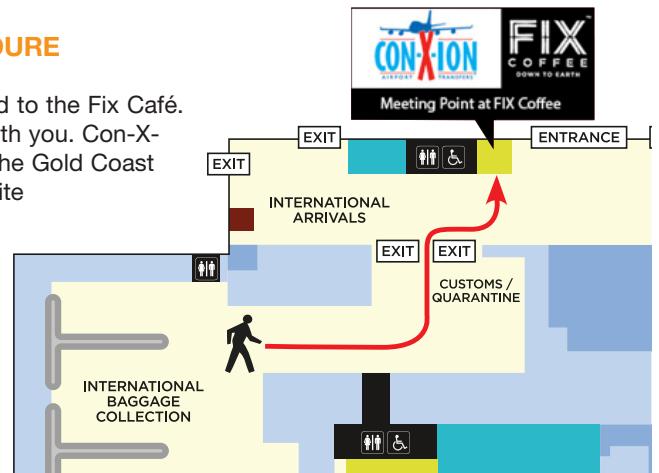
### GOLD COAST (OOL) DOMESTIC ARRIVAL PROCEDURE

On arrival please collect your luggage and proceed to the Fix Café. Please wait inside the café where your driver will make contact with you. Con-X-ion shuttle services depart on the hour. If you require assistance the Gold Coast Tourism Visitor Information Centre is located in the terminal opposite the car rental booths. Please ensure your mobile phone is switched on after arrival. If you need to make contact with Con-X-ion please phone 1300 266 946 or +61 7 5556 9888. Please endeavour to check in 5 minutes prior to scheduled departure to ensure the service can depart on time.



### GOLD COAST (OOL) INTERNATIONAL ARRIVAL PROCEDURE

On arrival please collect your luggage, clear customs and proceed to the Fix Café. Please wait inside the café where your driver will make contact with you. Con-X-ion shuttle services depart on the hour. If you require assistance the Gold Coast Tourism Visitor Information Centre is located in the terminal opposite the car rental booths. Please ensure your mobile phone is switched on after arrival. If you need to make contact with Con-X-ion please phone 1300 266 946 or +61 7 5556 9888. Please endeavour to check in 5 minutes prior to scheduled departure to ensure the service can depart on time.



### DEPARTING GOLD COAST LOCATION TO GOLD COAST AIRPORT PROCEDURE

Your Con-X-ion service should arrive during the 20 minute window outlined on your confirmation. You must be ready and waiting for the entirety of your allocated time frame, as our services will depart immediately once they reach the pick up location, and will be unable to wait for unaccounted for passengers. If you are not ready and waiting during the outlined times you may miss your assigned transfer and may not be eligible for refund or reimbursement. If your bus has not arrived after your scheduled departure time frame has expired please call Con-X-ion on 1300 266 946 or +61 7 5556 9888. Please do not depart the pick up location without first making contact.

### Late Flights

Passenger transfers booked on the last coach service allocated for the day that arrive on a delayed flight and miss their allocated pick up will need to make alternative travel arrangements at their own expense, a full refund will be issued for the arrival journey. Con-X-ion is not responsible for delayed flights. If your flight has been delayed and you are NOT on the last service of the day, please contact the Con-X-ion office 1300 266 946 and we will put you on the next available service.

Prices are subject to change. Terms & conditions apply. Please refer to website: [www.cxn.com.au](http://www.cxn.com.au)

Book Online [www.cxn.com.au](http://www.cxn.com.au)



GOLD COAST | BRISBANE | SUNSHINE COAST | TOOWOOMBA | CAIRNS  
SYDNEY | MELBOURNE | HERVEY BAY | BYRON BAY | FIJI





Book Online  
[www.cxn.com.au](http://www.cxn.com.au)

## SUNSHINE COAST DOMESTIC AND INTERNATIONAL TERMINALS

**NORTHERN SUBURBS - NOOSA, SUNSHINE BEACH, SUNRISE BEACH, CASTAWAYS, MARCUS BEACH**

### SUNSHINE COAST AIRPORT ARRIVAL PROCEDURE (ALL SERVICES NORTH OF THE AIRPORT)

**\*This airport transfer will be conducted by Con-X-ion's Code Share partner – Henry's**

Prior to collecting your luggage please proceed immediately to the Henry's Desk located adjacent to the baggage carousels. If you are unable to locate the Henry's Desk please phone +61 7 5474 0199.

### DEPARTING SUNSHINE COAST PROCEDURE (ALL SERVICES NORTH OF THE AIRPORT)

**\*This airport transfer will be conducted by Con-X-ion's Code Share partner – Henry's**

Please contact Henry's 24 hours prior to departure to confirm pick up time +61 7 5474 0199. Passengers are required to be ready and waiting outside their pick up point at least 15 minutes prior to their pick up time. Please contact Henry's if your service has not arrived within 10 minutes of your scheduled pickup time. Please ensure your mobile is switched on in case we need to contact you. **Please do not depart the pick up location without first making contact.**

**SOUTHERN SUBURBS - MAROOCHYDORE, MOOLOOLABA, ALEXANDRA BEACH, CALOUNDRA**

### SUNSHINE COAST AIRPORT ARRIVAL PROCEDURE (ALL SERVICES SOUTH OF THE AIRPORT)

Prior to collecting your luggage please report to the Con-X-ion counter in the arrivals hall adjacent to the luggage carousel. If you are unable to locate the Con-X-ion counter please phone 1300 266 946 or +61 7 5556 9888.

### DEPARTING SUNSHINE COAST PROCEDURE (ALL SERVICES SOUTH OF THE AIRPORT)

Your Con-X-ion service should arrive during the 20 minute window outlined on your confirmation. You must be ready and waiting for the entirety of your allocated time frame, as our services will depart immediately once they reach the pick up location, and will be unable to wait for unaccounted for passengers. If you are not ready and waiting during the outlined times you may miss your assigned transfer and may not be eligible for refund or reimbursement. If your bus has not arrived after your scheduled departure time frame has expired please call Con-X-ion on 1300 266 946 or +61 7 5556 9888. **Please do not depart the pick up location without first making contact.**

#### Late Flights

Passenger transfers booked on the last coach service allocated for the day that arrive on a delayed flight and miss their allocated pick up will need to make alternative travel arrangements at their own expense, a full refund will be issued for the arrival journey. Con-X-ion is not responsible for delayed flights. If your flight has been delayed and you are NOT on the last service of the day, please contact the Con-X-ion office 1300 266 946 and we will put you on the next available service.

Prices are subject to change. Terms & conditions apply. Please refer to website: [www.cxn.com.au](http://www.cxn.com.au)

Book Online [www.cxn.com.au](http://www.cxn.com.au)



GOLD COAST | BRISBANE | SUNSHINE COAST | TOOWOOMBA | CAIRNS  
SYDNEY | MELBOURNE | HERVEY BAY | BYRON BAY | FIJI





Book Online  
[www.cxn.com.au](http://www.cxn.com.au)

## CAIRNS DOMESTIC AND INTERNATIONAL TERMINALS

### ARRIVAL PROCEDURES

**\*This airport transfer will be conducted by Con-x-ion's Code Share partner – Exemplar**

#### Cairns Domestic Terminal

On arrival follow the 'Baggage' signs:

- Pass through the shopping concourse,
- Turn left at the far end, then
- Exit through large glass doors into the baggage collection area.

Your driver, in a uniform of dark blue trousers/skirt, white shirt and dark blue tie/neck-scarf will be waiting adjacent your baggage carousel. They will be holding a board with your name on it. Please make yourself known to your driver before collecting your baggage.

If you are in a coach, once the other passengers for your vehicle are gathered you will then exit the large glass doors at the far end of the baggage area and then proceed to your vehicle along a covered walkway.

If you are in a limousine you will be escorted out of the eastern doors and to your vehicle just outside.

#### Cairns International Terminal

After you have passed through customs you will exit through solid doors to a general reception area. Watch for your driver just outside those doors. From there it is a short walk to either your coach or private sedan.

### DEPARTING CAIRNS PROCEDURES

**\*This airport transfer will be conducted by Con-X-ion's Code Share partner – EXEMPLAR**

Passengers are required to be ready and waiting outside their pick up point at least 15 minutes prior to their pickup time. Please contact Exemplar 48 hours before departing to confirm pickup time on 07 4213 3333. Please ensure your mobile is switched on in case we need to contact you. **Please do not depart the pick up location without first making contact.**

#### Late Flights

Passenger transfers booked on the last coach service allocated for the day that arrive on a delayed flight and miss their allocated pick up will need to make alternative travel arrangements at their own expense, a full refund will be issued for the arrival journey. Con-X-ion is not responsible for delayed flights. If your flight has been delayed and you are NOT on the last service of the day, please contact the Con-X-ion office 1300 266 946 and we will put you on the next available service.

Prices are subject to change. Terms & conditions apply. Please refer to website: [www.cxn.com.au](http://www.cxn.com.au)

Book Online [www.cxn.com.au](http://www.cxn.com.au)



GOLD COAST | BRISBANE | SUNSHINE COAST | TOOWOOMBA | CAIRNS  
SYDNEY | MELBOURNE | HERVEY BAY | BYRON BAY | FIJI





Book Online  
www.cxn.com.au

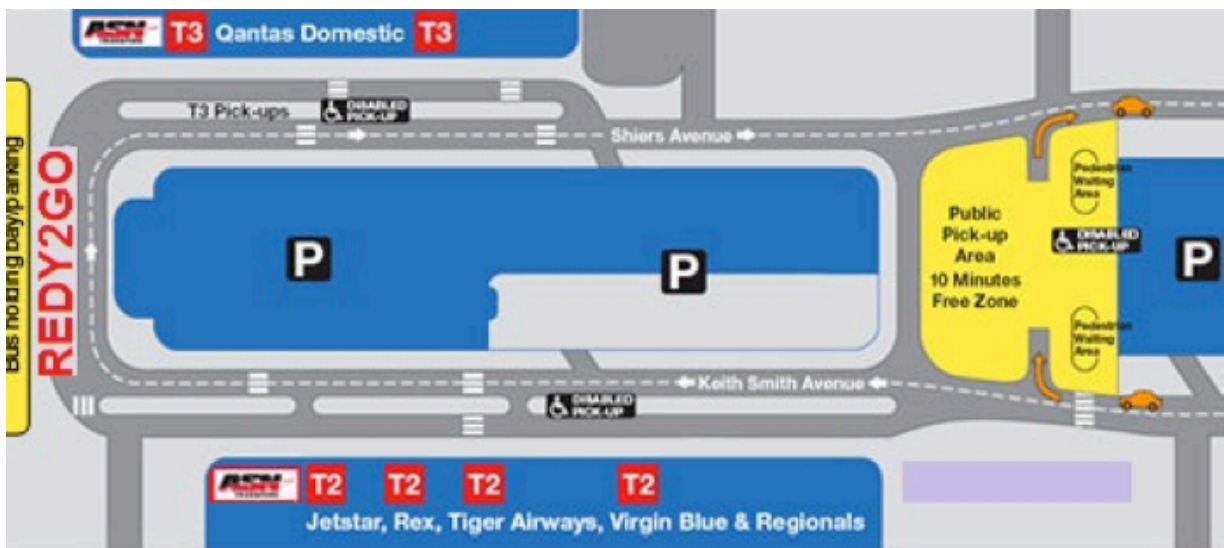


## SYDNEY DOMESTIC AND INTERNATIONAL TERMINALS

**\*This airport transfer will be conducted by Con-x-ion's Code Share partner – Redy2go**

### SYDNEY DOMESTIC AIRPORT ARRIVAL PROCEDURE.

On arrival clients are required to proceed directly to the Redy2Go rank located outside the terminal between T2 and T3 or proceed to one of our two desks located inside T2. Please contact Redy2Go on +61 2 9534 0820 if unsure or unable to locate the bus rank. (See map)



### SYDNEY INTERNATIONAL AIRPORT ARRIVAL PROCEDURE.

For T1, clients are required to proceed to one of our service desks located inside the arrivals hall as you exit the customs area (directly in front of you if you exit from Gate A or to the left if you exit Gate B). You will then be directed to the Redy2Go bus rank outside the terminal building. Please contact Redy2Go on +61 2 9534 0820 if unsure or unable to locate the service desk or bus rank. (See map)

### DEPARTING SYDNEY PROCEDURE

Passengers are required to be ready and waiting outside their accommodation and designated pick up point at least 10 minutes prior to their pick-up time. This should enable passengers to connect with their respective flights and allow for traffic fluctuations. Please ensure your mobile is switched on in case Redy2Go needs to make contact. If your service has not arrived 15 minutes after your scheduled departure time, please make contact Redy2Go on +61 2 9534 0820. Please do not depart the pick up location without first making contact.

### Late Flights

Passenger transfers booked on the last coach service allocated for the day that arrive on a delayed flight and miss their allocated pick up will need to make alternative travel arrangements at their own expense, a full refund will be issued for the arrival journey. Con-X-ion is not responsible for delayed flights. If your flight has been delayed and you are NOT on the last service of the day, please contact the Con-X-ion office 1300 266 946 and we will put you on the next available service.

Prices are subject to change. Terms & conditions apply. Please refer to website: www.cxn.com.au

Book Online [www.cxn.com.au](http://www.cxn.com.au)



GOLD COAST | BRISBANE | SUNSHINE COAST | TOOWOOMBA | CAIRNS  
SYDNEY | MELBOURNE | HERVEY BAY | BYRON BAY | FIJI





Book Online  
www.cxn.com.au



**MELBOURNE DOMESTIC & INTERNATIONAL TERMINALS** - Page 1 of 2

**MELBOURNE DOMESTIC & INTERNATIONAL ARRIVALS**

**\*This airport transfer will be conducted by Con-X-ion's Code Share partner - Bluebird**

When you have arrived at Melbourne Airport and have collected your luggage, please proceed to Bluebird Meeting points as follows:

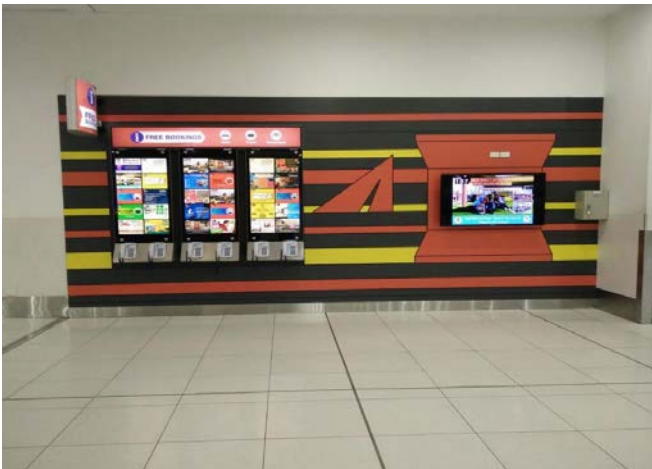
**T1 : Qantas Arrival Area – Next to T1 Information Counter (Tour East Desk)**



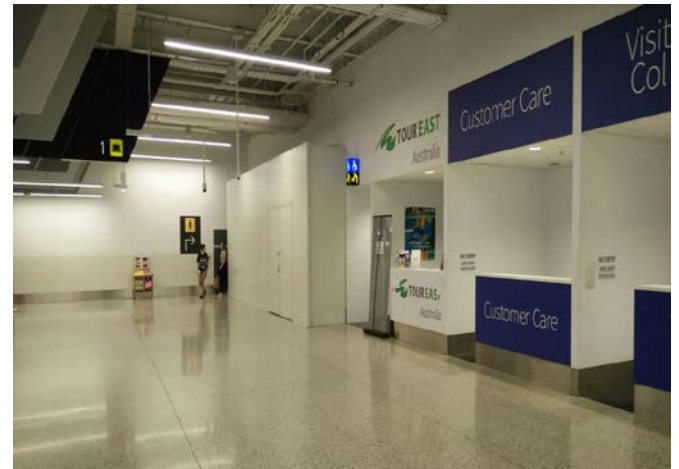
**T2 : International Arrival Area – Meeting Point/Chauffeur Meeting Point Area**



**T3 : Virgin Australia Arrival Area - At the base of escalator in the carousel / luggage belts area (advertising board with free phones)**



**T4 : Jetstar, Tiger and Rex Arrival Area - Tour East Desk/Customer Care Area**



Prices are subject to change. Terms & conditions apply. Please refer to website: www.cxn.com.au

Book Online [www.cxn.com.au](http://www.cxn.com.au)

**MAKE YOUR FLIGHT GUARANTEED**



GOLD COAST | BRISBANE | SUNSHINE COAST | TOOWOOMBA | CAIRNS  
SYDNEY | MELBOURNE | HERVEY BAY | BYRON BAY | FIJI





Book Online  
[www.cxn.com.au](http://www.cxn.com.au)

## MELBOURNE DOMESTIC & INTERNATIONAL TERMINALS - Page 2 of 2

Please wait for our representative to meet and collect you in those designated areas. Our representative will hold either Bluebird Sign or sign with your travel agent logo on it.

If you have difficulties locating the meeting point area, please call us at: +61 3 9039 5500

If you do not have an Australian mobile number, there are 3 advertising boards with free phones at Melbourne Airport, please dial 3 digits Bluebird designated number on the advertising board.

Advertising Boards with Free Phone locations:

**T1 : Qantas and Jetstar Arrival Area – Next to Information Counter (Tour East Desk)**

**T2 : International Arrival Area – Information Centre Counter**

**T3 : Virgin Australia Arrival Area – At the base of escalator in the carousel / luggage belts area**

**T4: Jetstar, Tiger and Rex Arrival Area – Nearby your flight designated arrival luggage belt or next to Information Counter (Tour East Desk)**

### MELBOURNE DEPARTURE PROCEDURE

**\*This airport transfer will be conducted by Con-x-ion's Code Share partner – Bluebird**

Your service should arrive during the 20-minute window outlined on your confirmation. You must be ready and waiting for the entirety of your pick up window as our bus will depart immediately once they reach said location, and will be unable to wait for unfound passengers.

If your bus has not arrived and your pick up window has expired please ring Bluebird direct: +61 3 9039 5500 or ask your hotel concierge to get in touch with Bluebird. **Please do not depart the pick up location without first making contact.**

If you are not ready and waiting during the outlined times you may miss your assigned transfer and may not be eligible for refund or reimbursement.

Please ensure your mobile is switched on in case we need to contact you.

### Late Flights

Passenger transfers booked on the last coach service allocated for the day that arrive on a delayed flight and miss their allocated pick up will need to make alternative travel arrangements at their own expense, a full refund will be issued for the arrival journey. Con-X-ion is not responsible for delayed flights. If your flight has been delayed and you are NOT on the last service of the day, please contact the Con-X-ion office 1300 266 946 and we will put you on the next available service.

Prices are subject to change. Terms & conditions apply. Please refer to website: [www.cxn.com.au](http://www.cxn.com.au)

Book Online [www.cxn.com.au](http://www.cxn.com.au)



GOLD COAST | BRISBANE | SUNSHINE COAST | TOOWOOMBA | CAIRNS  
SYDNEY | MELBOURNE | HERVEY BAY | BYRON BAY | FIJI





Book Online  
[www.cxn.com.au](http://www.cxn.com.au)

## FIJI DOMESTIC & INTERNATIONAL TERMINALS



### FIJI ARRIVALS PROCEDURE

**\*This airport transfer will be conducted by Con-X-ion's Code Share partner- Tourist Transport Fiji**

As soon as clients clear customs, they are required to immediately proceed to the Tourist Transport Fiji/Con-X-ion arrivals office located on the ground floor. Bus transfers will depart prior to schedule if all pre-booked passengers are accounted for. Once Fiji Customs & Immigration processing is complete for of all arriving customers from your particular flight your service will depart. The Tourist Transport Fiji/Con-X-ion airport office is open 24 hours per day and can be contacted on +679 672 2074. Please ensure your mobile is switched on.

### FIJI DEPARTING PROCEDURE

**\*This airport transfer will be conducted by Con-X-ion's Code Share partner- Tourist Transport Fiji**

Clients are required to confirm their departure transfer 24hrs in advance by calling Tourist Transport Fiji/ Con-X-ion airport office on +679 672 2074.

Passengers are required to be ready and waiting outside their accommodation and designated pick-up point at least 10 minutes prior to their pick-up time. This should enable passengers to connect with their respective flights and allow for traffic fluctuations. If your bus has not arrived 15 minutes after your scheduled departure please call Tourist Transport Fiji/Con-X-ion airport office on +679 672 2074. Please ensure your mobile is switched on.

### Late Flights

Passenger transfers booked on the last coach service allocated for the day that arrive on a delayed flight and miss their allocated pick up will need to make alternative travel arrangements at their own expense, a full refund will be issued for the arrival journey. Con-X-ion is not responsible for for delayed flights. if your flight has been delayed and you are NOT on the last service of the day, please contact the Con-X-ion office 1300 266 946 and we will put you on the next available service.

Prices are subject to change. Terms & conditions apply. Please refer to website: [www.cxn.com.au](http://www.cxn.com.au)

Book Online [www.cxn.com.au](http://www.cxn.com.au)



GOLD COAST | BRISBANE | SUNSHINE COAST | TOOWOOMBA | CAIRNS  
SYDNEY | MELBOURNE | HERVEY BAY | BYRON BAY | FIJI





For full Terms & Conditions, please refer to our website [www.cxn.com.au](http://www.cxn.com.au)

### **Airport Departures**

Due to the precise nature of aircraft timetables, airport transfer passengers should aim to be ready and waiting outside their hotel or designated pick-up point at least 10 minutes prior to pick-up time. This should enable passengers to connect with their respective flights. Con-X-ion advises that the coach is unable to wait for passengers who are not ready at the agreed pickup time for departures. We aim to keep waiting time to a minimum, although short delays may occur beyond our control. Clients are advised to reconfirm their transfer booking 24 hours prior to travel.

### **Baggage Information**

Luggage is limited to one suitcase and one piece of hand luggage per person (per airport weight guidelines). Surcharge applies to additional luggage items (see below). All luggage must be clearly labelled by the passenger/s, including name and residential address. Passenger/s should carry valuable items (e.g. jewellery, expensive equipment, cash etc.) onboard.

Surcharge applies to the follow luggage items.

- Additional suitcases - \$6.00 per extra piece of luggage
- Surfboards (Gold Coast & Brisbane Services) - \$6.00 each. Surfboards must be less than 6ft long (183 cm), Should the surfboard exceed 6ft they will be unable to be transported due to our coaches' trailer size restrictions.
- Surfboards (Sunshine Coast Services)- Passengers carrying a Surfboard (we can take any size) need to supply their own straps and are required to be attached by the passengers. Surfboards will incur an additional fee (\$6 each).
- Bike in Bike Box - \$10.00 each
- Golf Clubs - \$6.00 (one set per passenger)

Excess luggage falling outside the above groups, will have the cost confirmed by the driver upon boarding.

**Passengers are strongly advised to purchase relevant Travel Insurance.**

### **Late Flights**

Passenger transfers booked on the last coach service allocated for the day that arrive on a delayed flight and miss their allocated pick up will need to make alternative travel arrangements at their own expense, a full refund will be issued for the arrival journey. Con-x-ion is not responsible for delayed flights. If your flight has been delayed and you are NOT on the last service of the day, please contact the Con-x-ion office 1300 266 946 and we will put you on the next available service.

### **Service Interruptions**

Pick-up and drop-off times are approximate, Con-x-ion does not take responsibility for delays due to traffic or any other factor. Due to the geographical logistics of the Gold Coast, a secondary service may be required to minimise travel time in an endeavour to provide a more timely service.

### **Cancellation Policy**

**Refunds will only be made subject to the following conditions:**

- There is a \$10 administration fee with every booking cancellation.
- Cancellations in excess of 24 hours, we will refund your fare less the \$10.00 administration fee.
- Cancellations less than 24 hours do not receive a refund.

### **Passenger Info**

- Infant = 0-1 years old. Infants travel is free on an adults passengers lap.
- Child = 1-13 years old. Charged at the child rate. Children aged 1-3 can be held on the lap of adult travelling passenger. Children 3-13 years old must occupy their own seat.
- Concession = student/senior. Proof of Concession is required when boarding.
- Family = 2 adults and 2 children
- Passengers under the age of 16 years old must be accompanied by and Adult

A: PO Box 283 Ashmore City, QLD Australia 4214  
P: +61-7 555 69 888 | F: +61-7 3020 3805  
E: [bookings@cxn.com.au](mailto:bookings@cxn.com.au)  
W: [www.cxn.com.au](http://www.cxn.com.au)



Book Online [www.cxn.com.au](http://www.cxn.com.au)



GOLD COAST | BRISBANE | SUNSHINE COAST | TOOWOOMBA | CAIRNS  
SYDNEY | MELBOURNE | HERVEY BAY | BYRON BAY | FIJI



For full Terms & Conditions, please refer to our website [www.cxn.com.au](http://www.cxn.com.au)

### **Con-x-ion Guarantee**

Con-x-ion's policy is to ensure you meet your flight stress free and on time, every time and we are committed to it!

To ensure our services get you to your flight on time, every time, Con-x-ion monitors' real time traffic conditions. Our service schedules are adjusted in accordance with perceived delays minimising impact on our airport arrival times. We take the stress of traffic out of your hands allowing you to sit back, relax, and be rest assured that you will meet your flight on time, every time.

Con-x-ion is exceedingly confident that we can deliver you to your flight on time, every time. So much so, that in the unlikely event that you miss your designated flight when traveling with Con-x-ion, we will book you on the next available flight, business class at our expense.

In the unlikely event that a Con-x-ion passenger fails to meet their designated flight through error on behalf of Con-x-ion and our staff, Con-x-ion agrees to upgrade the affected passenger to the next available business class flight at the company's expense.

The Con-x-ion guarantee is not intended to replace the need for our passengers to take out travel insurance and we recommend you do so. Passengers who fail to meet their designated flights due to unforeseen circumstances that arise outside of Con-x-ion's control would generally be covered under these policies. These may include but are not limited to:

Natural disaster/severe weather conditions

If you or you agent supply us with the incorrect booking information.

Traffic accidents causing the closure to the route to the airport

This guarantee is not applicable to passengers who choose to travel at own risk (AOR) and not on the Con-x-ion recommended service.

Con-x-ion logs passengers pick up and set down times. Clients are expected to report for flight check-in within 10 minutes of their set down time. Clients who miss their check-in due to a delay once dropped at the airport will not be eligible for the Con-x-ion Guarantee.

**\*Please note: the Con-x-ion guarantee is only applicable to our South East Queensland service locations: Gold Coast, Brisbane, Sunshine Coast, Toowoomba and Hervey Bay.**

### **Online Agent Information**

Those entities on registration with Con-x-ion will be required to choose a username and password to enable use of their account. Keeping your username and password confidential and secure from misuse is entirely your responsibility. Any transaction, use, or activities from your account-giving rise to any liability monetary, legal, or otherwise are your responsibility. Where you have reason to suspect that there may have been unauthorised use of your account, or any breach of security you must inform Con-X-ion immediately. Con-X-ion will not be responsible, under any circumstances whatsoever, for any losses that are incurred due to misuse of your account by; another, with or without your consent or knowledge. To transact you must have the legal capacity to enter into this agreement i.e.; you are above 18 years of age and are of sound mind.

A: PO Box 283 Ashmore City, QLD Australia 4214  
P: +61-7 555 69 888 | F: +61-7 3020 3805  
E: [bookings@cxn.com.au](mailto:bookings@cxn.com.au)  
W: [www.cxn.com.au](http://www.cxn.com.au)



Book Online [www.cxn.com.au](http://www.cxn.com.au)



Or be upgraded to the next available business class flight. Conditions apply, see website for details

GOLD COAST | BRISBANE | SUNSHINE COAST | TOOWOOMBA | CAIRNS  
SYDNEY | MELBOURNE | HERVEY BAY | BYRON BAY | FIJI

